

LIVE AUCTION!

JOIN US ON SITE
SAT. AUG. 23 AT 10 AM

Basement Home + Shop on 1.99± Acres in Two Tracts
135 Mint Springs Road • New Market, AL 35761



Country living at its best! Make plans to attend this live, on-site auction as we sell a move-in ready basement ranch home on 0.66± acres along with an adjoining workshop and barn on 1.33± acres. The 3 bedroom, 2 bath home features recent flooring, paint, and smart home updates as well as a full basement with a garage and additional storage area that could be converted into more living space if desired. The home is neat as a tack and features an open den/kitchen area plus a back porch with an awesome view. The adjacent lot includes a large concrete block shop with a very tall roll up door that includes a hoist system inside adequate for working on heavy machinery. A sturdy barn adds to the covered storage area. There is plenty of space for additional buildings or a home, too. Check it out at the open house or call us for a preview, then come ready to bid on sale day!

PREVIEW • SUNDAY AUG. 17th from 2pm to 4pm • Other times by appt.



256-513-3333

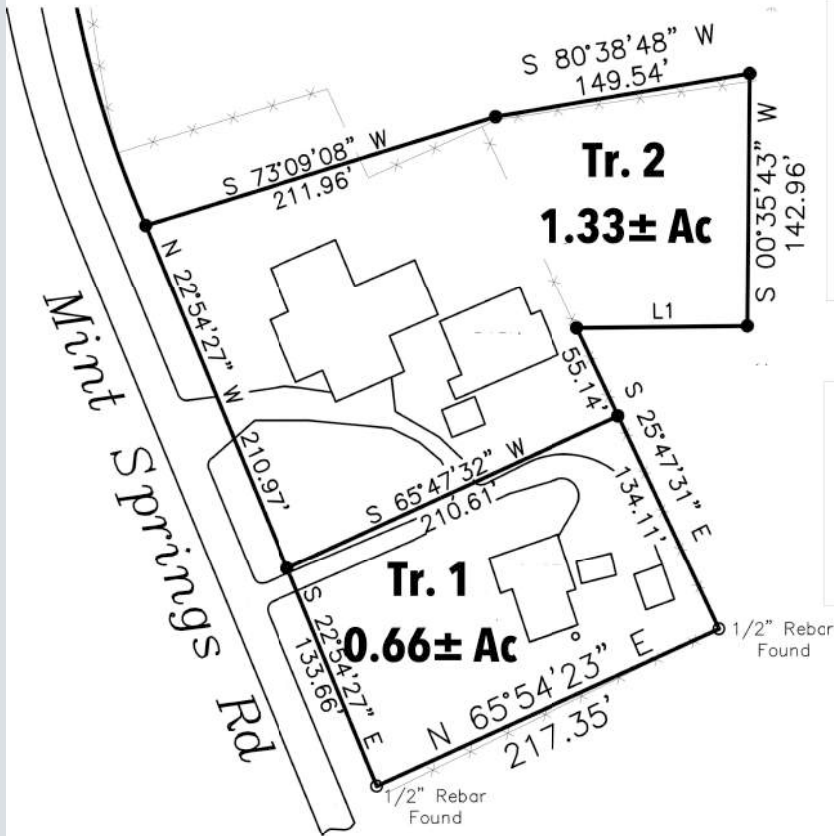


Craig Buchanan AL#1365 TN#4806
John Tumminello AL#5564

Your Auction Team!



VISIT southerneliteauctions.com for a property video, interior photos, detailed home info, a survey plat, and more! Questions? Give us a call at 256-513-3333.



AUCTION TERMS: 20% down at close of the auction with the balance due on or before 30 days. A 10% auction premium applies. Announcements made sale day take precedence. Insurable title to be conveyed by warranty deed. Properties sell in "AS IS, WHERE IS" condition. Properties constructed before 1978 may contain lead paint. If inspection is desired, please make arrangements with us to do so at least 10 days prior to the auction date.

AUCTION LOCATION: From the caution light in downtown New Market on Winchester Road, turn west on New Market Road. Go approximately 1.5 miles and turn right on Mint Springs Road. Sale site is on the right. **AUCTION SIGNS POSTED.** Or, use 135 Mint Springs Road, New Market, AL 35761 on your GPS.

Auction Plat • Not To Scale
New Survey Available

